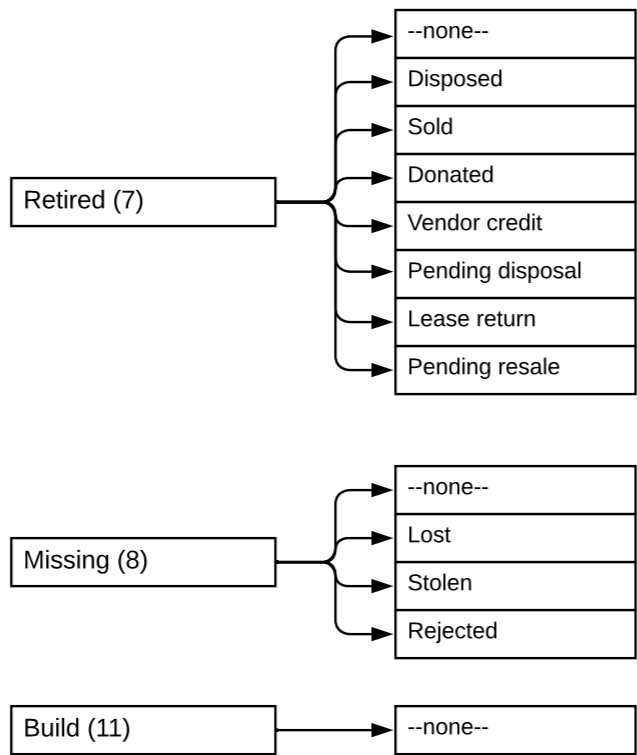
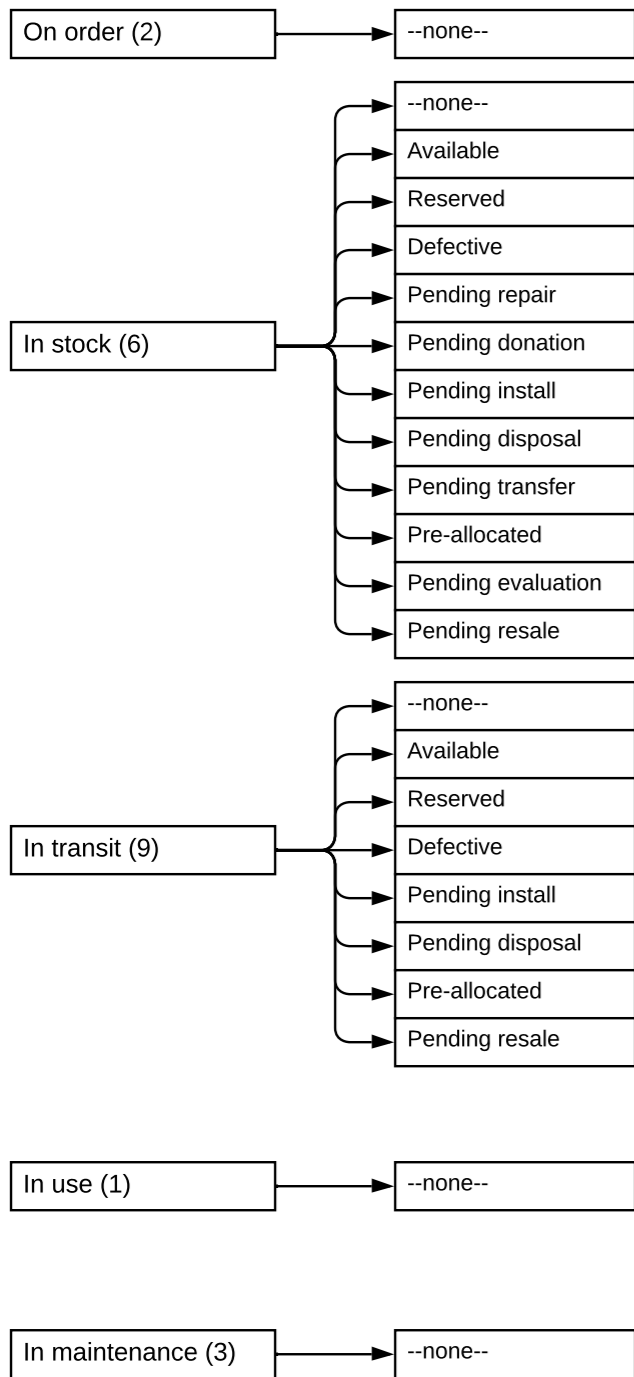
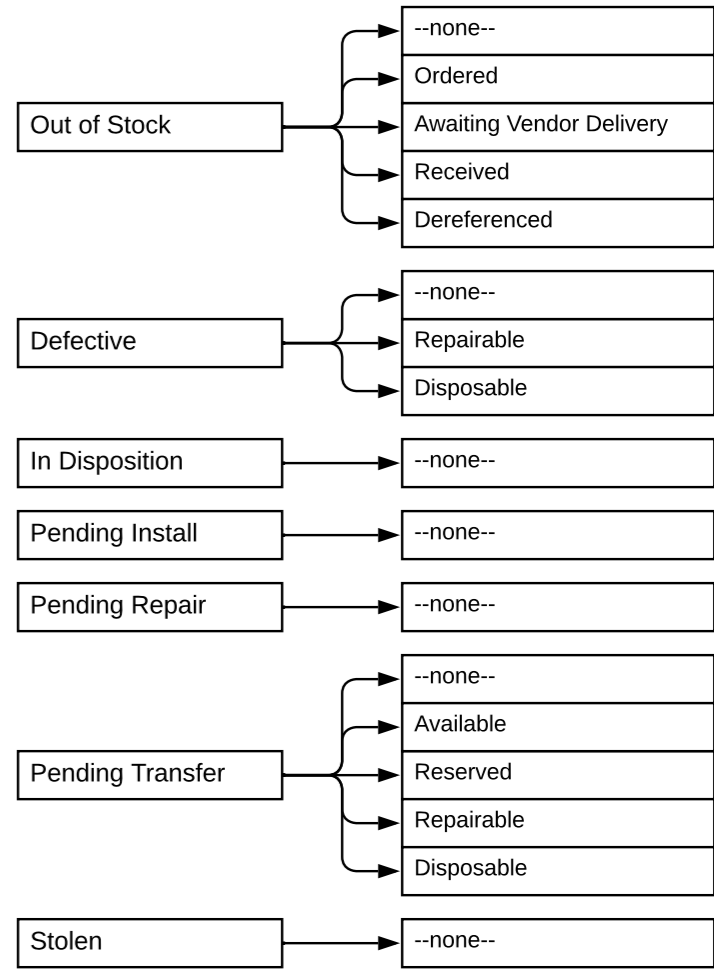
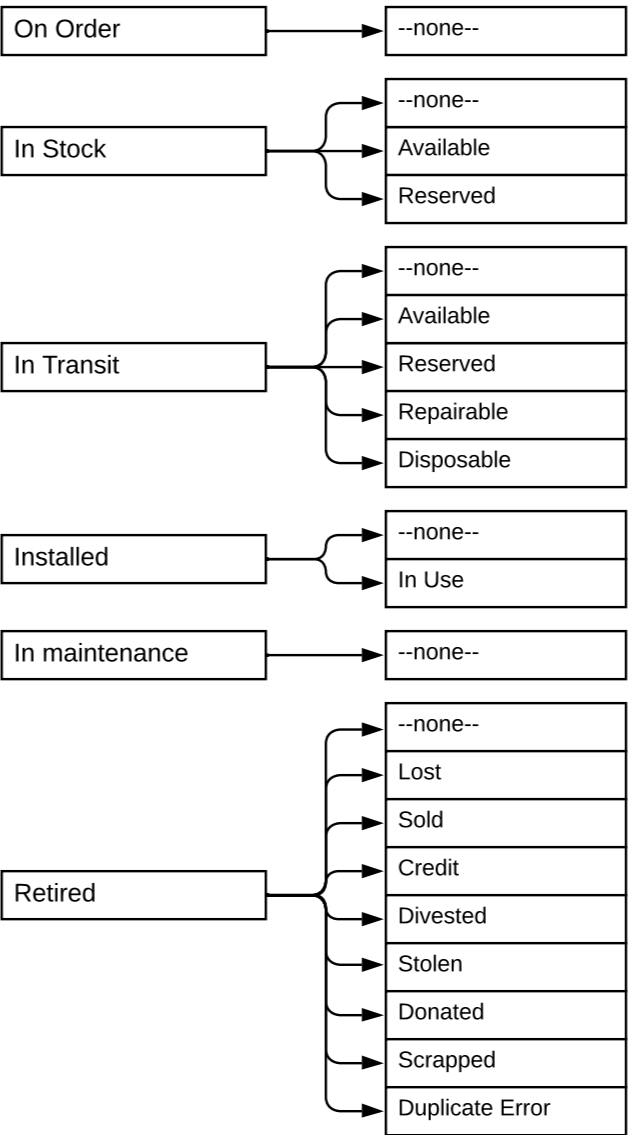


Asset (State / Substate)



Must update the AssetandCISynchronizer Script Include KB Article - AssetandCISynchronizer

Configuration Item (Hardware Status / Hardware substatus)



Asset-CI Hardware Status Mapping

Asset-CI Install Status Mapping

Install Status (Status):
 --None--
 Absent
 In Maintenance
 In Stock
 Installed
 On Order
 Pending Install
 Pending Repair
 Retired
 Stolen

Operational status Will change the Asset State and (CI) Hardware Status
 Operational
 Non-Operational
 Repair in Progress
 DR Standby
 Ready
 Retired

Incident Change

Life Cycle Stage
 Ideation
 Defective
 Deploy
 Design
 End of Life
 Inventory
 Missing
 Operational
 Purchase

Life Cycle Stage Status

Under Evaluation	End of Support
Pilot	Pending Retirement
On Order	Retired
Pre-Allocated	Obsolete
Available	Chartered
Test	Design
In Use	Build
Legal Hold	

Life Cycle Mappings

Life Cycle Stage
 Ideation
 Defective
 Deploy
 Design
 End of Life
 Inventory
 Missing
 Operational
 Purchase

Life Cycle Stage Status

Under Evaluation	End of Support
Pilot	Pending Retirement
On Order	Retired
Pre-Allocated	Obsolete
Available	Chartered
Test	Design
In Use	Build
Legal Hold	

NOTE:
 There is a scheduled job Asset- Create asset delayed sync that runs every 15 minutes that creates assets based on CI discovery. The glide.create_alm_asset.async property only controls creation of Assets based on CIs. If false Assets are created immediately and if true they are created asynchronous (with a delay) Updating a CI does not necessarily mean that the corresponding Asset needs an update. Only synchronized attributes that are updated on the CI will trigger an update on the Asset